



Our Vision:
Eco-Products will be in the Vanguard™ of our Zero Waste future.

Our Mission:
We understand the connection between the health of the planet and the impacts of disposable packaging. Every day we work to advance Zero Waste Systems, and help our customers be better stewards of the environment.

At Eco-Products, we believe big things can happen in small packages. We believe a cup can make a powerful statement about values.

We are not satisfied with the status quo of using virgin, non-renewable materials to make products that are used for a short time, then go to a landfill forever.

That's why we develop single-use packaging made from plants and post-consumer recycled content, and it's why we go to the ends of the earth to help our customers keep them out of the landfill.

We are adamant about the benefits of our products, but we know they are not perfect. They are a good start, but there is still room to be better.

Our society has a long way to go before every product can be successfully composted or recycled. And even when composting and recycling is an option, does that mean we have a permission slip to continue our disposable lifestyle?

We don't think so. We advocate for a Zero Waste future, and we are clear eyed about how far we have to go.

Let's take a step in the right direction. Let's fight for change.

Let's Make It Better.

We're the most recognized and authentic brand in environmentally preferable solutions. As category leaders, we're able to deliver expertise, benefits, and services that are unavailable anywhere else on the market.



CUSTOMER-FOCUSED SOLUTIONS

- ✓ Products designed for health and safety
- ✓ Wrapped cutlery and straws
- ✓ Cutlerease™ Cutlery Dispensing System

INNOVATION

- ✓ Award-winning product design team
- ✓ Cutting-edge product development
- ✓ Operator Specialists to help execute Zero Waste Systems
- ✓ A Systems Solution for waste diversion

BUNDLE

- ✓ A one-stop shop assortment with 450+ SKUs
- ✓ Two product lines offer choice of environmental benefits
- ✓ Third-party certifications back up our environmental claims

ADVOCACY

- ✓ Thought leaders of Zero Waste Systems
- ✓ Driving expanded access to composting infrastructure
- ✓ Dedicated sustainability experts on staff

SERVICES

- ✓ Marketing and communications assistance
- ✓ Custom life-cycle assessment reports
- ✓ Zero Waste consulting
- ✓ Custom print, emboss, and product development

SOLUTIONS

INNOVATION

BUNDLE

ADVOCACY

SERVICES

BUNDLE:

We're big fans of a systems approach to waste diversion featuring a comprehensive line of consistently branded disposables. We make 450+ stock SKUs, and we're continually developing new products to serve everything from apple fritters to zucchini tots.

Our Two Product Lines

GreenStripe® – Made with Renewable Resources



RENEWABLE RESOURCES



- Made from renewable plant materials that can be grown again and again.
- The vast majority of GreenStripe® products are compliant with ASTM standards for compostability and many are BPI-certified compostable, which means they can return to soil and help plants grow.
- Not made from non-renewable oil or gas, like traditional plastics.
- Not suitable for backyard composting. These products need the high heat and careful management of a commercial pile to break down. Commercial facilities may not exist in your area.
- Paper and sugarcane products can go in the freezer, but they are not airtight. Freshness and freezer burn can become issues if left there for too long. PLA can become brittle when frozen, so we don't recommend putting these products in the freezer.

BlueStripe® – Made with Post-Consumer Recycled Content



POST-CONSUMER RECYCLED CONTENT



- Made from post-consumer recycled materials that have been used, recycled, and repurposed, meaning fewer virgin resources are required and less landfill waste is created.
- Making new products from recycled materials helps drive recycling markets and infrastructure.
- Plastic can become brittle when frozen, so we don't recommend putting these products in the freezer.
- BlueStripe® products incorporate the highest amount of post-consumer recycled material available without compromising performance.
- BlueStripe® plastic products can't be recycled in many communities, but check with yours to find out what they'll accept.

| | Material type | What it is | Why we use it | What we use it for |
|--|--|--|---|---|
| | PLA | <ul style="list-style-type: none"> • Polylactic acid • Plastic made from starchy plants, like corn or sugar | <ul style="list-style-type: none"> • Looks and feels like traditional plastic, but is compostable in commercial composting facilities • Want a plastic cup without the petroleum? Here it is. | <ul style="list-style-type: none"> • Cold Cups • Lining for Hot Cups & Paper Food Containers • Lids • Cutlery • Clear Containers |
| | SUGARCANE | <ul style="list-style-type: none"> • Also known as bagasse • Made from the stalk left over after the cane juice is extracted to make sugar | <ul style="list-style-type: none"> • Renewable and fast growing • Bagasse fiber is a byproduct that would otherwise be discarded or burned • Compostable in commercial facilities | <ul style="list-style-type: none"> • Plates • Bowls • Containers • Trays |
| | SUGARCANE & BAMBOO BLEND | <ul style="list-style-type: none"> • Mix of bagasse and bamboo fiber | <ul style="list-style-type: none"> • Renewable and fast growing • Bagasse fiber is a byproduct that would otherwise be discarded or burned • Compostable in commercial facilities | <ul style="list-style-type: none"> • Plates • Bowls |
| | PSM | <ul style="list-style-type: none"> • Plant starch material – a mix of plant materials, like corn, and fillers, like polypropylene and talc | <ul style="list-style-type: none"> • Heat tolerant and super durable • Partially made with renewable materials (plant starch) | <ul style="list-style-type: none"> • Cutlery |
| | POST-CONSUMER RECYCLED FIBER (PCF) | <ul style="list-style-type: none"> • Used office paper, junk mail, and other paper | <ul style="list-style-type: none"> • Post-consumer paper reduces demand for virgin fiber • Supports recycling programs by providing demand for post-consumer material | <ul style="list-style-type: none"> • Hot Cups • Paper Food Containers • EcoGrips |
| | POST-CONSUMER RECYCLED PET (RPET) | <ul style="list-style-type: none"> • Polyethylene terephthalate (PET) is commonly used in soda and water bottles | <ul style="list-style-type: none"> • Post-consumer recycled PET reduces demand for virgin plastic • Supports recycling programs by providing demand for post-consumer material | <ul style="list-style-type: none"> • Cold Cups • Containers • Lids |
| | POST-CONSUMER RECYCLED POLYSTYRENE (RPS) | <ul style="list-style-type: none"> • Polystyrene (PS) is found in products such as CD cases and plastic hangers | <ul style="list-style-type: none"> • Post-consumer recycled PS reduces demand for virgin plastic • Supports recycling programs by providing demand for post-consumer material | <ul style="list-style-type: none"> • Cutlery • Hot Cup Lids |

Cutlerease™ Dispensing System

Clean, Hygienic Cutlery

- » The innovative Cutlerease system dispenses clean cutlery one piece at a time.
- » Tape tabs offer easy pick up and loading of cutlery into cartridge without having to touch any part of the cutlery.
- » Handle-first delivery ensures guests touch only the handle of the cutlery they are taking.
- » No trays or levers; helps prevent accumulation and transfer of germs and bacteria.

Space Savings

- » Compact footprint: <1 ft² for 3:1 space savings over the other guys.

Efficient Dispensing

- » Customers can take only what is needed.
- » Cutlerease automatically dispenses one piece of cutlery at a time.
- » Guests simply pull on the handle of the piece they want, and the next piece pops out ready for the next person.

Convenient & Easy to Use

- » Customize your cutlery options. Cutlerease is so versatile, you can mix and match cutlery to meet the needs of your business. Need more spoons than forks? No problem.

Zero Waste Programs

- » Eco-Products Cutlerease cutlery is BPI-certified compostable, so it's compatible with Zero Waste Systems.



This cutlery is not suited for extremely hot foods. Please note the heat tolerance and ask your rep for samples if you would like to test.

| CUTLEREASE™ | | | | | | COMPOSTABLE | | | QTY | |
|-----------------------------|-------------|---|--------|----------|----------------|---------------|-----------|--------------|----------------|--------|
| GS/BS | ITEM | DESCRIPTION | MAX | MATERIAL | COLD FOOD ONLY | MICROWAVEABLE | FREEZABLE | CUSTOMIZABLE | | |
| Cutlery Refill Packs | | | | | | | | | | |
| ∞ | EP-CE6KNWHT | 6in Knife, White | 120° F | PLA | ■ | ■ | ■ | ■ | 24 packs of 40 | 960/cs |
| ∞ | EP-CE6FKWHT | 6in Fork, White | 120° F | PLA | ■ | ■ | ■ | ■ | 24 packs of 40 | 960/cs |
| ∞ | EP-CE6SPWHT | 6in Spoon, White | 120° F | PLA | ■ | ■ | ■ | ■ | 24 packs of 40 | 960/cs |
| Dispenser Parts | | | | | | | | | | |
| | EPCEBASE | Cutlerease 3-Slot Base Unit, Gray | | | | | | | | 1/cs |
| | EPCEKN | Dispensing Unit for Cutlerease Compostable Knives | | | | | | | | 1/cs |
| | EPCEFK | Dispensing Unit for Cutlerease Compostable Forks | | | | | | | | 1/cs |
| | EPCESP | Dispensing Unit for Cutlerease Compostable Spoons | | | | | | | | 1/cs |

U.S. patent no. 8,272,533; other U.S. and international patents pending

Vanguard™ Molded Fiber

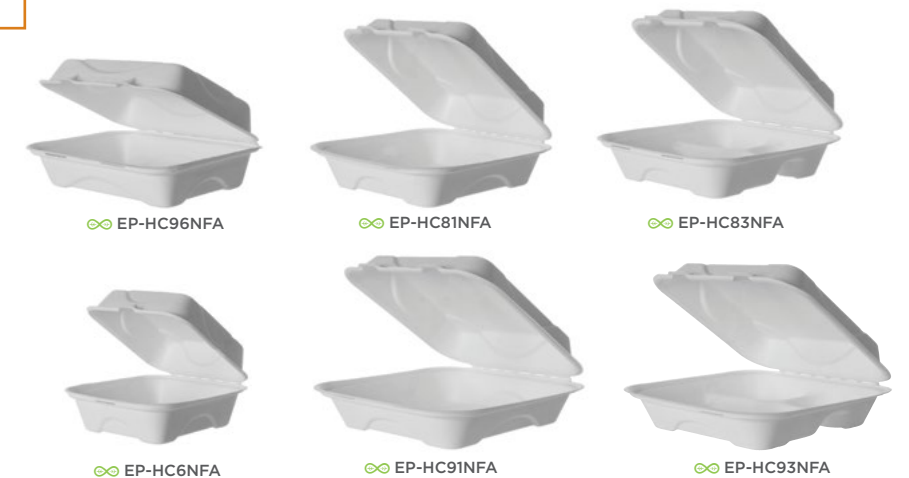
In April 2019, we announced a groundbreaking new line of molded fiber plates and containers. This new line – called Vanguard™ – demonstrates our continued leadership and innovation in foodservice packaging. The Vanguard™ line uses proprietary alternative compounds to achieve grease-resistance performance without relying on conventional PFAS*. The first SKUs to be produced in the Vanguard™ line are listed in the table below. For specific inquiries about making a product with Vanguard™ fiber, please contact your sales rep.

- » Made from sugarcane
- » Microwaveable and freezable
- » Hot and cold food friendly
- » Grease- and cut-resistant
- » Proprietary alternative compounds to achieve grease-resistance performance
- » Meets BPI's requirements for compostability certification effective January 1, 2020
- » Patents pending on the new formula

* Per- and polyfluoroalkyl substances



INNOVATION IN MANUFACTURING



VANGUARD™ MOLDED FIBER

| GS/BS | ITEM# | DESCRIPTION | LIDS | MATERIAL | COMPOSTABLE | COLD FOOD ONLY | MICROWAVEABLE | FREEZABLE | CUSTOMIZABLE | PRINTED SLEEVE | QTY |
|-------------------|------------|------------------------------------|------------------------|-----------|-------------|----------------|---------------|-----------|--------------|----------------|--------|
| Plates | | | | | | | | | | | |
| ∞ | EP-P013NFA | 9in Plate, White | P013LID | Sugarcane | ■ | ■ | ■ | ■ | ■ | 10 packs of 50 | 500/cs |
| ∞ | EP-P005NFA | 10in Plate, White | N/A | Sugarcane | ■ | ■ | ■ | ■ | ■ | 10 packs of 50 | 500/cs |
| Bowls | | | | | | | | | | | |
| ∞ | EP-BL32NFA | 32oz Noodle Bowl, 7.5x2.5in, White | BLRLID, BLLID, BLRDLID | Sugarcane | ■ | ■ | ■ | ■ | ■ | 8 packs of 50 | 400/cs |
| Clamshells | | | | | | | | | | | |
| ∞ | EP-HC96NFA | 9x6x3in Clamshell, White | | Sugarcane | ■ | ■ | ■ | ■ | ■ | 5 packs of 50 | 250/cs |
| ∞ | EP-HC6NFA | 6x6x3in Clamshell, White | | Sugarcane | ■ | ■ | ■ | ■ | ■ | 10 packs of 50 | 500/cs |
| ∞ | EP-HC81NFA | 8x8x3in Clamshell, White | | Sugarcane | ■ | ■ | ■ | ■ | ■ | 4 packs of 50 | 200/cs |
| ∞ | EP-HC83NFA | 8x8x3in, 3-Compt Clamshell, White | | Sugarcane | ■ | ■ | ■ | ■ | ■ | 4 packs of 50 | 200/cs |
| ∞ | EP-HC91NFA | 9x9x3in Clamshell, White | | Sugarcane | ■ | ■ | ■ | ■ | ■ | 4 packs of 50 | 200/cs |
| ∞ | EP-HC93NFA | 9x9x3in, 3-Compt Clamshell, White | | Sugarcane | ■ | ■ | ■ | ■ | ■ | 4 packs of 50 | 200/cs |

www.ecoproducts.com

2022 Core Products Guide

BUNDLE

BUNDLE

Paper Food Containers & Hot Cups

These may look just like your everyday paper cups, but they are oh so much more. Made entirely from materials that can be grown again and again, these cups fit into your life easily and without excess waste. Compostable, renewable, good looking, and functional. You couldn't ask for a better fit.

- » Made from renewable resources
- » Lined with PLA, a plant-based plastic
- » Meet ASTM standards for compostability
- » BPI-certified compostable



World Art™
EP-BHC8-WA // EP-BHC10-WA
EP-BHC12-WA // EP-BHC16-WA // EP-BHC20-WA



World Art™ Insulated
EP-BNHC12-WD // EP-BNHC20T-WD
EP-BNHC8-WA // EP-BNHC16-WA



Stir Sticks
NT-ST-C10C
EcoGrip®
EG-2000



EcoLid®
EP-ECOLID-8 // EP-ECOLID-W



EcoLid® 25%
EP-HL8-WR



EcoLid® 25%
EP-HL16-WR // EP-HL16-BR
EP-HL16-BWNR



Dual-Temp Lids
EP-HCLDT-R

Stir Sticks

- » Made from renewable resources
- » Generally accepted as compostable

EcoGrip®

- » Made with 85% post-consumer recycled fiber
- » BPI-certified compostable
- » Recyclable with other paper products

EcoLid®

- » Made from PLA, a plant-based plastic
- » Meet ASTM standards for compostability
- » BPI-certified compostable

EcoLid® 25

- » Made with 25% post-consumer recycled plastic



World Art™
EP-BSC8-WA // EP-BSC12-WA // EP-BSC16-WA // EP-BSC32-WA



EP-ECOLID-SPS // EP-ECOLID-SPL
EP-BSC5DLID // EP-BSC8DLID



EcoLid® 25%
EP-BRSLID-S // EP-BRSLID-L

PAPER FOOD CONTAINERS — RENEWABLE

| GS/BS | ITEM# | DESCRIPTION | LID | MATERIAL | COMPOSTABLE | COLD FOOD ONLY | MICROWAVEABLE | FREEZEABLE | CUSTOMIZABLE | PRINTED SLEEVE | QTY |
|--|---------------|---------------------------------|----------------------|-----------|-------------|----------------|---------------|------------|--------------|----------------|----------------------------|
| World Art™ | | | | | | | | | | | |
| ∞ | EP-BSC8-WA | 8oz | ECOLID-SPS, BSC8DLID | Paper/PLA | ■ | ■ | ■ | ■ | ■ | ■ | 20 packs of 50 1,000/cs |
| ∞ | EP-BSC12-WA | 12oz | ECOLID-SPL, BSCDLID | Paper/PLA | ■ | ■ | ■ | ■ | ■ | ■ | 20 packs of 25 500/cs |
| ∞ | EP-BSC16-WA | 16oz | ECOLID-SPL, BSCDLID | Paper/PLA | ■ | ■ | ■ | ■ | ■ | ■ | 20 packs of 25 500/cs |
| ∞ | EP-BSC32-WA | 32oz | ECOLID-SPL, BSCDLID | Paper/PLA | ■ | ■ | ■ | ■ | ■ | ■ | 20 packs of 25 500/cs |
| EcoLid® Paper Food Container Lids | | | | | | | | | | | |
| ∞ | EP-ECOLID-SPS | Lid: 8-10oz, Flat, Translucent | | PLA | ■ | ■ | ■ | ■ | ■ | ■ | 20 packs of 50 1,000/cs |
| ∞ | EP-ECOLID-SPL | Lid: 12-32oz, Flat, Translucent | | PLA | ■ | ■ | ■ | ■ | ■ | ■ | 10 packs of 50 500/cs |
| ∞ | EP-BSC5DLID | Lid: 5oz, Dome, Clear | | PLA | ■ | ■ | ■ | ■ | ■ | ■ | 20 packs of 50 1,000/cs |
| ∞ | EP-BSC8DLID | Lid: 8-10oz, Dome, Clear | | PLA | ■ | ■ | ■ | ■ | ■ | ■ | 20 packs of 50 1,000/cs |
| EcoLid® 25% Paper Food Container Lids | | | | | | | | | | | |
| ∞ | EP-BRSLID-S | Lid: 8oz, Flat, White | | 25% RPS | ■ | ■ | ■ | ■ | ■ | ■ | 20 packs of 50 1,000/cs |
| ∞ | EP-BRSLID-L | Lid: 12-32oz, Flat, White | | 25% RPS | ■ | ■ | ■ | ■ | ■ | ■ | 10 packs of 50 500/cs |

HOT CUPS — RENEWABLE

| GS/BS | ITEM# | DESCRIPTION | LID | MATERIAL | COMPOSTABLE | COLD FOOD ONLY | MICROWAVEABLE | FREEZEABLE | CUSTOMIZABLE | PRINTED SLEEVE | QTY |
|-----------------------------|---------------|-------------|--------------------------------|-----------|-------------|----------------|---------------|------------|--------------|----------------|----------------------------|
| World Art™ | | | | | | | | | | | |
| ∞ | EP-BHC8-WA | 8oz | ECOLID-8 | Paper/PLA | ■ | ■ | ■ | ■ | ■ | ■ | 20 packs of 50 1,000/cs |
| ∞ | EP-BHC10-WA | 10oz | ECOLID-W | Paper/PLA | ■ | ■ | ■ | ■ | ■ | ■ | 20 packs of 50 1,000/cs |
| ∞ | EP-BHC12-WA | 12oz | ECOLID-W | Paper/PLA | ■ | ■ | ■ | ■ | ■ | ■ | 20 packs of 50 1,000/cs |
| ∞ | EP-BHC16-WA | 16oz | ECOLID-W | Paper/PLA | ■ | ■ | ■ | ■ | ■ | ■ | 20 packs of 50 1,000/cs |
| ∞ | EP-BHC20-WA | 20oz | ECOLID-W | Paper/PLA | ■ | ■ | ■ | ■ | ■ | ■ | 20 packs of 50 1,000/cs |
| Insulated World Art™ | | | | | | | | | | | |
| ∞ | EP-BNHC8-WD | 8oz | ECOLID-8 | Paper/PLA | ■ | ■ | ■ | ■ | ■ | ■ | 20 packs of 40 800/cs |
| ∞ | EP-BNHC12-WD | 12oz | ECOLID-W HCLDT-R (see pg11) | Paper/PLA | ■ | ■ | ■ | ■ | ■ | ■ | 15 packs of 40 600/cs |
| ∞ | EP-BNHC16-WD | 16oz | ECOLID-W HCLDT-R (see pg11) | Paper/PLA | ■ | ■ | ■ | ■ | ■ | ■ | 15 packs of 40 600/cs |
| ∞ | EP-BNHC20T-WD | 20oz | ECOLID-W HCLDT-R (see pg11) | Paper/PLA | ■ | ■ | ■ | ■ | ■ | ■ | 15 packs of 40 600/cs |

HOT CUP ACCESSORIES

| | | | | | | | | | | | |
|--|--------------|---------------------------------|--|-----------|---|---|---|---|---|---|--------------------------------|
| Stir Sticks | | | | | | | | | | | |
| ∞ | NT-ST-C10C | 7in Wooden Stir Sticks, Birch | | Birch | ■ | ■ | ■ | ■ | ■ | ■ | 10 packs of 1,000 10,000/cs |
| EcoGrip® | | | | | | | | | | | |
| ∞ | EG-2000 | EcoGrip® Hot Cup Sleeves, Kraft | | 85% PCF | ■ | ■ | ■ | ■ | ■ | ■ | Bulk Pack 1,300/cs |
| EcoLid® Renewable & Compostable Hot Cup Lids | | | | | | | | | | | |
| ∞ | EP-ECOLID-8 | Lid: 8oz, Translucent | | Paper/PLA | ■ | ■ | ■ | ■ | ■ | ■ | 16 packs of 50 800/cs |
| ∞ | EP-ECOLID-W | Lid: 10-20oz, Translucent | | Paper/PLA | ■ | ■ | ■ | ■ | ■ | ■ | 16 packs of 50 800/cs |
| EcoLid® 25% Recycled Hot Cup Lids | | | | | | | | | | | |
| ∞ | EP-HL8-WR | Lid: 8oz, White | | 25% RPS | ■ | ■ | ■ | ■ | ■ | ■ | 10 packs of 100 1,000/cs |
| ∞ | EP-HL16-WR | Lid: 10-20oz, White | | 25% RPS | ■ | ■ | ■ | ■ | ■ | ■ | 10 packs of 100 1,000/cs |
| ∞ | EP-HL16-BR | Lid: 10-20oz, Black | | 25% RPS | ■ | ■ | ■ | ■ | ■ | ■ | 10 packs of 100 1,000/cs |
| ∞ | EP-HL16-BWNR | Lid: 10-20oz, Brown | | 25% RPS | ■ | ■ | ■ | ■ | ■ | ■ | 10 packs of 100 1,000/cs |
| EcoLid® 25% & Recycled Dual-Temp Hot Cup Lids | | | | | | | | | | | |
| ∞ | EP-HCLDT-R | Lid: 10-20oz, Translucent | | 25% RPS | ■ | ■ | ■ | ■ | ■ | ■ | 12 packs of 50 600/cs |

GreenStripe® Cold Cups

This is not your (virgin plastic, non-compostable, non-recyclable) red party cup. This is the one and only GreenStripe® renewable and compostable Cold Cup! This cup holds drinks without leaking, rocks its environmental attributes, and is always the life of the party. Best of all, when it's time to go home, this cup is 100% certified compostable and returns to the soil...until your next bash.

- » Dome, flat, and sip lids
- » Made from renewable resources
- » Made with PLA bioplastic, a plant-based plastic
- » Meet ASTM standards for compostability
- » BPI-certified compostable

PLA Straws

Need straws? We got 'em! We offer all kinds of options for lengths, diameters, and wrappers. Our PLA and Paper Straws are compliant with many straw bans around the U.S. Not sure what's allowed in your area? We stay on top of legislation like that, so we can help you find the info. Reach out to your Sales Rep or Operator Specialist to discuss.

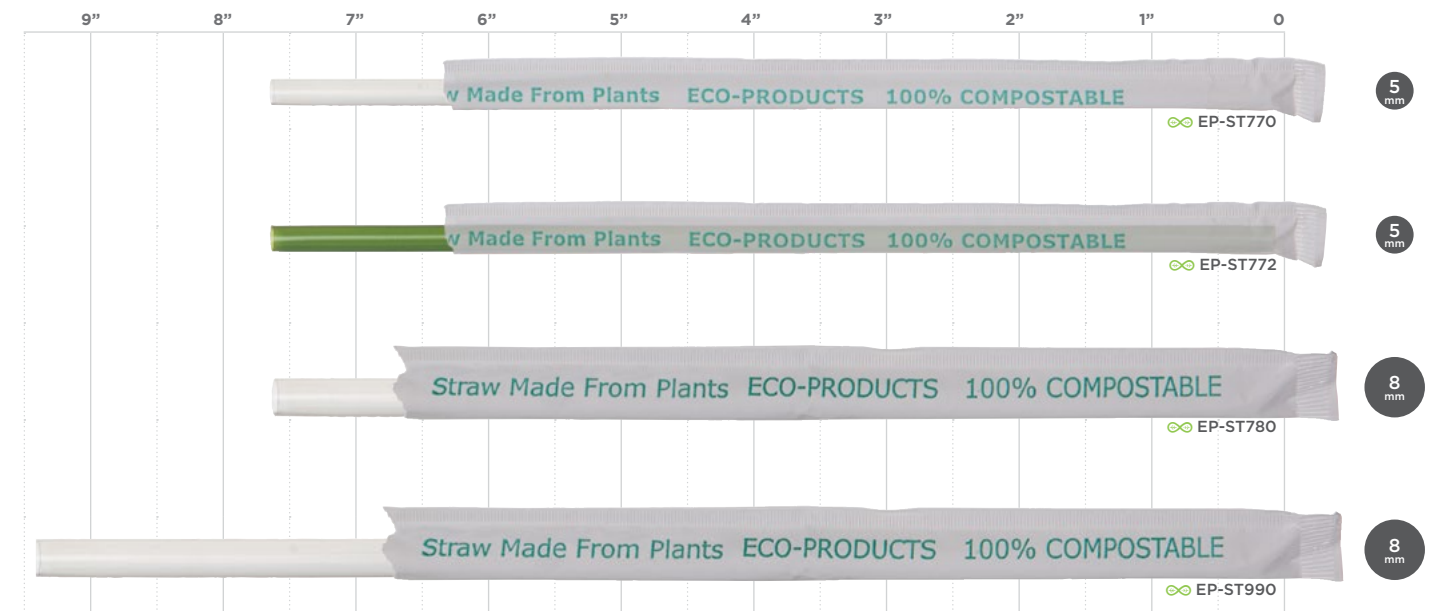
- » Made with PLA bioplastic, a plant-based plastic
- » Meet ASTM standards for compostability
- » BPI-certified compostable



EP-FLCC // EP-FLCS // EP-DLCC



EP-CC9S-GS // EP-CC12-GS // EP-CC16-GS
EP-CC20-GS // EP-CC24-GS



Straw images have been scaled down to fit. Diameters shown at actual size.

COLD CUPS — RENEWABLE

| GS/BS | ITEM# | DESCRIPTION | LID | MATERIAL | COMPOSTABLE | | | | QTY | |
|---------------------|------------|---|---------------------------|----------|----------------------|---------------|-----------|--------------|-----------------|----------|
| | | | | | COLD FOOD ONLY | MICROWAVEABLE | FREEZABLE | CUSTOMIZABLE | | |
| GreenStripe® | | | | | | | | | | |
| ∞ | EP-CC9S-GS | 9oz | FLCC, DLCC, DLCC-NH, FLCS | PLA | ■ | ■ | ■ | ■ | 20 packs of 50 | 1,000/cs |
| ∞ | EP-CC12-GS | 12oz | FLCC, DLCC, DLCC-NH, FLCS | PLA | ■ | ■ | ■ | ■ | 20 packs of 50 | 1,000/cs |
| ∞ | EP-CC16-GS | 16oz | FLCC, DLCC, DLCC-NH, FLCS | PLA | ■ | ■ | ■ | ■ | 20 packs of 50 | 1,000/cs |
| ∞ | EP-CC20-GS | 20oz | FLCC, DLCC, DLCC-NH, FLCS | PLA | ■ | ■ | ■ | ■ | 20 packs of 50 | 1,000/cs |
| ∞ | EP-CC24-GS | 24oz | FLCC, DLCC, DLCC-NH, FLCS | PLA | ■ | ■ | ■ | ■ | 20 packs of 50 | 1,000/cs |
| Lids | | | | | | | | | | |
| ∞ | EP-FLCC | Lid: 9 & 12-24oz, Flat Lid, Clear | | PLA | ■ | ■ | ■ | ■ | 10 packs of 100 | 1,000/cs |
| ∞ | EP-DLCC | Lid: 9 & 12-24oz, Dome Lid (With Hole), Clear | | PLA | ■ | ■ | ■ | ■ | 10 packs of 100 | 1,000/cs |
| ∞ | EP-FLCS | Lid: 9 & 12-24oz, Flat Sip Lid, Clear | | PLA | ■ | ■ | ■ | ■ | 20 packs of 50 | 1,000/cs |
| PLA Straws | | | | | | | | | | |
| ∞ | EP-ST770 | 7.75in | 5mm | ■ | Clear, Wrapped | ■ | ■ | ■ | 24 packs of 400 | 9,600/cs |
| ∞ | EP-ST772 | 7.75in | 5mm | ■ | Green, Wrapped | ■ | ■ | ■ | 24 packs of 400 | 9,600/cs |
| ∞ | EP-ST780 | 7.75in | 8mm | ■ | Clear, Wrapped | ■ | ■ | ■ | 24 packs of 300 | 7,200/cs |
| ∞ | EP-ST990 | 9.5in | 8mm | ■ | Clear, Wrapped Jumbo | ■ | ■ | ■ | 16 packs of 300 | 4,800/cs |

RECTANGULAR DELIS

(lids and bases sold together)



EP-RC8

EP-RC12

EP-RC16

EP-RC24

EP-RC32

EP-RC48

CLEAR CLAMSHELLS



EP-LC6

EP-LC81

PORTION CUPS



EP-PCLID

EP-PC200

EP-PC400

ROUND DELIS



EP-RDPLID // EP-RDP8

EP-RDPLID // EP-RDP12

EP-RDPLID // EP-RDP16

SALAD BOWLS & LIDS



EP-SB18

EP-SB24

EP-SB32

EP-SB48

Clear Grab & Go Containers

Life is all about choices, and isn't it a wonderful feeling to stand in front of a display case of beautifully arranged food in colorful stacks to choose what to eat for lunch? Say no to the waste that comes with old-school containers and reach for something different. Fill your fridge with these attractive and environmentally preferable clear containers. Your customers will grab, go, and even better, come back again for seconds. They're clearly a better choice.

- » Made from renewable resources
- » Made with PLA bioplastic, a plant-based plastic
- » Meet ASTM standards for compostability
- » BPI-certified compostable
- » Cold food only



CLEAR GRAB & GO CONTAINERS

| GS/BS | ITEM# | DESCRIPTION | LID | MATERIAL | COMPOSTABLE | | | | QTY |
|--|-----------|-----------------------------------|--------|----------|----------------|--------------|-----------|-----------------|----------|
| | | | | | COLD FOOD ONLY | MICROWAVABLE | FREEZABLE | CUSTOMIZABLE | |
| Rectangular Deli Containers with Lids | | | | | | | | | |
| ∞ | EP-RC8 | 8oz Container & Lid, Clear | | PLA | ■ | ■ | ■ | 3 packs of 100 | 300/cs |
| ∞ | EP-RC12 | 12oz Container & Lid, Clear | | PLA | ■ | ■ | ■ | 3 packs of 100 | 300/cs |
| ∞ | EP-RC16 | 16oz Container & Lid, Clear | | PLA | ■ | ■ | ■ | 3 packs of 100 | 300/cs |
| ∞ | EP-RC24 | 24oz Container & Lid, Clear | | PLA | ■ | ■ | ■ | 4 packs of 50 | 200/cs |
| ∞ | EP-RC32 | 32oz Container & Lid, Clear | | PLA | ■ | ■ | ■ | 4 packs of 50 | 200/cs |
| ∞ | EP-RC48 | 48oz Container & Lid, Clear | | PLA | ■ | ■ | ■ | 4 packs of 50 | 200/cs |
| Portion Cups | | | | | | | | | |
| ∞ | EP-PC200 | 2oz Portion Cup, Clear | PCLID | PLA | ■ | ■ | ■ | 20 packs of 100 | 2,000/cs |
| ∞ | EP-PC400 | 4oz Portion Cup, Clear | PCLID | PLA | ■ | ■ | ■ | 20 packs of 100 | 2,000/cs |
| ∞ | EP-PCLID | Lid: 2-4oz Portion Cup Lid, Clear | | PLA | ■ | ■ | ■ | 20 packs of 100 | 2,000/cs |
| Round Deli Containers | | | | | | | | | |
| ∞ | EP-RDP8 | 8oz Round Deli Container, Clear | RDPLID | PLA | ■ | ■ | ■ | 10 packs of 50 | 500/cs |
| ∞ | EP-RDP12 | 12oz Round Deli Container, Clear | RDPLID | PLA | ■ | ■ | ■ | 10 packs of 50 | 500/cs |
| ∞ | EP-RDP16 | 16oz Round Deli Container, Clear | RDPLID | PLA | ■ | ■ | ■ | 10 packs of 50 | 500/cs |
| ∞ | EP-RDPLID | Lid: 8-32oz Round Deli Lid, Clear | | PLA | ■ | ■ | ■ | 10 packs of 50 | 500/cs |
| Clear Clamshells | | | | | | | | | |
| ∞ | EP-LC6 | 6x6x3in Clamshell, Clear | | PLA | ■ | ■ | ■ | 3 packs of 80 | 240/cs |
| ∞ | EP-LC81 | 8x8x3in Clamshell, Clear | | PLA | ■ | ■ | ■ | 2 packs of 80 | 160/cs |
| Salad Bowls & Lids | | | | | | | | | |
| ∞ | EP-SB18 | 18oz Salad Bowl & Lid, Clear | | PLA | ■ | ■ | ■ | 3 packs of 50 | 150/cs |
| ∞ | EP-SB24 | 24oz Salad Bowl & Lid, Clear | | PLA | ■ | ■ | ■ | 3 packs of 50 | 150/cs |
| ∞ | EP-SB32 | 32oz Salad Bowl & Lid, Clear | | PLA | ■ | ■ | ■ | 3 packs of 50 | 150/cs |
| ∞ | EP-SB48 | 48oz Salad Bowl & Lid, Clear | | PLA | ■ | ■ | ■ | 3 packs of 50 | 150/cs |

WorldView™ & Regalia

Our WorldView™ Containers combine sugarcane bases with RPET or PLA lids for maximum strength and optimum presentation. Renewable and compostable PLA lids are perfect for cold foods, while the 100% recycled content lids work equally well for hot or cold dishes.

- » Available in a variety of shapes and sizes
- » Bases made from renewable and reclaimed sugarcane fiber
- » Lids made with PLA bioplastic or 100% post-consumer RPET
- » Bases and PLA lids meet ASTM standards for compostability
- » Bases and RPET lids are hot-food friendly



EP-SCR9LID



EP-SCPTR14LIDR



EP-SCR9



EP-SCPTR14



EP-SCTRS1317

WORLDVIEW™ SUGARCANE CONTAINERS

| GS/BS | ITEM# | DESCRIPTION | MATERIAL | COMPOSTABLE | COLD FOOD ONLY | MICROWAVEABLE | FREEZABLE | CUSTOMIZABLE | PRINTED SLEEVE | QTY |
|---------------|----------------|---------------------------------|-----------|-------------|----------------|---------------|-----------|--------------|----------------|---------------|
| Rounds | | | | | | | | | | |
| ∞ | EP-SCR9 | 9in Round, 34oz, White | Sugarcane | ■ | ■ | ■ | ■ | ■ | ■ | 8 packs of 50 |
| ⊕ | EP-SCR9LID | Lid: 9in Round Lid, Clear | 100% RPET | ■ | ■ | ■ | ■ | ■ | ■ | 6 packs of 50 |
| ∞ | EP-SCPTR14 | 14in Pizza Tray Base, White | Sugarcane | ■ | ■ | ■ | ■ | ■ | ■ | 1 pack of 50 |
| ⊕ | EP-SCPTR14LIDR | Lid: 14in Pizza Tray Lid, Clear | 100% RPET | ■ | ■ | ■ | ■ | ■ | ■ | 1 pack of 50 |

REGALIA™ SERVINGWARE

| GS/BS | ITEM# | DESCRIPTION | MATERIAL | COMPOSTABLE | COLD FOOD ONLY | MICROWAVEABLE | FREEZABLE | CUSTOMIZABLE | PRINTED SLEEVE | QTY |
|--------------|-------------|---------------------|-----------|-------------|----------------|---------------|-----------|--------------|----------------|---------------|
| Trays | | | | | | | | | | |
| ∞ | EP-SCTR1317 | 13x17in Tray, White | Sugarcane | ■ | ■ | ■ | ■ | ■ | ■ | 2 packs of 50 |

WORLDVIEW™ SQUARES



EP-SCS5LID



EP-SCS5



EP-SCS5T



EP-SCS8SLID



EP-SCS8T



EP-SCS9SLID



EP-SCS9T

WORLDVIEW™ RECTANGLES



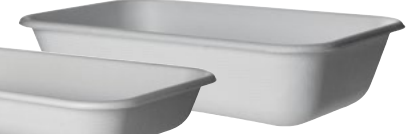
EP-SCRC24LID



EP-SCRC24LIDP



EP-SCRC24



EP-SCRC32



EP-SCRC16LID



EP-SCRC16



EP-SCRC12



EP-SCRC107LID-R



EP-SCRC107

WORLDVIEW™ SUGARCANE CONTAINERS

| ITEM# | DESCRIPTION | MATERIAL | COMPOSTABLE | | | | | QTY | | | |
|-------------------|-----------------|--------------------------------|-----------------|---------------|----------------|---|---|-----|---|----------------|--------|
| | | | COLD FOOD ONLY | MICROWAVEABLE | CUSTOMIZABLE | | | | | | |
| | | | | | PRINTED SLEEVE | | | | | | |
| Rectangles | | | | | | | | | | | |
| ∞ | EP-SCRC12 | 12oz Rectangle, White | 7x4.75x1in | Sugarcane | ■ | ■ | ■ | ■ | ■ | 8 packs of 50 | 400/cs |
| ∞ | EP-SCRC16 | 16oz Rectangle, White | 7x4.75x1.5in | Sugarcane | ■ | ■ | ■ | ■ | ■ | 8 packs of 50 | 400/cs |
| ⊕ | EP-SCRC16LID | Lid: 12/16oz Lid, Clear | 7.25x5x1.5in | 100% RPET | ■ | ■ | ■ | ■ | ■ | 8 packs of 50 | 400/cs |
| ∞ | EP-SCRC24 | 24oz Rectangle, White | 8.5x5.5x1.5in | Sugarcane | ■ | ■ | ■ | ■ | ■ | 8 packs of 50 | 400/cs |
| ∞ | EP-SCRC32 | 32oz Rectangle, White | 8.5x5.5x2in | Sugarcane | ■ | ■ | ■ | ■ | ■ | 8 packs of 50 | 400/cs |
| ⊕ | EP-SCRC24LID | Lid: 24/32oz Lid, Clear | 8.75x5.75x1.5in | 100% RPET | ■ | ■ | ■ | ■ | ■ | 8 packs of 50 | 400/cs |
| ∞ | EP-SCRC24LIDP | Lid: 24/32oz Lid, Clear | 8.75x5.75x1.5in | PLA | ■ | ■ | ■ | ■ | ■ | 4 packs of 50 | 200/cs |
| ∞ | EP-SCRC107 | 48oz Rectangle, White | 10x7x1.75in | Sugarcane | ■ | ■ | ■ | ■ | ■ | 4 packs of 50 | 200/cs |
| ⊕ | EP-SCRC107LID-R | Lid: 48oz Lid, Clear | 10x7x1.75in | 100% RPET | ■ | ■ | ■ | ■ | ■ | 4 packs of 50 | 200/cs |
| Squares | | | | | | | | | | | |
| ∞ | EP-SCS5 | 5in Square (10oz), White | 5x5x1in | Sugarcane | ■ | ■ | ■ | ■ | ■ | 16 packs of 50 | 800/cs |
| ∞ | EP-SCS5T | 5in Square (10oz), Tall, White | 5x5x2in | Sugarcane | ■ | ■ | ■ | ■ | ■ | 16 packs of 50 | 800/cs |
| ∞ | EP-SCS5LID | Lid: 5in Lid, Clear | 5x5x2in | PLA | ■ | ■ | ■ | ■ | ■ | 8 packs of 50 | 400/cs |
| ∞ | EP-SCS8T | 8in Square (36oz), White | 8x8x1.75in | Sugarcane | ■ | ■ | ■ | ■ | ■ | 4 packs of 50 | 200/cs |
| ∞ | EP-SCS8SLID | Lid: 8in Lid, Clear | 8x8x1.75in | PLA | ■ | ■ | ■ | ■ | ■ | 4 packs of 50 | 200/cs |
| ∞ | EP-SCS9T | 9in Square (47oz), White | 9x9x1.5in | Sugarcane | ■ | ■ | ■ | ■ | ■ | 4 packs of 50 | 200/cs |
| ∞ | EP-SCS9SLID | Lid: 9in Lid, Clear | 9x9x1.75in | PLA | ■ | ■ | ■ | ■ | ■ | 4 packs of 50 | 200/cs |

ROUND PLATES



∞ EP-P016



∞ EP-P005



∞ EP-P013LID // ∞ EP-P013

SQUARE PLATES



∞ EP-P023

CLASSIC BOWLS



∞ EP-BL12

LARGE BOWL LIDS



∞ EP-BLLID



∞ EP-BLRLID



∞ EP-BLRDLID

LARGE COUPE BOWLS



∞ EP-BL24-C



∞ EP-BL32-C

LARGE NOODLE BOWLS



∞ EP-BL24



∞ EP-BL32



∞ EP-BL40

Sugarcane Plates & Bowls

Just say yes to sugarcane! Also known as bagasse, this reclaimed fiber is strong, sturdy, renewable, and compostable. A multitude of sizes and shapes make our plates and bowls suited for the tiniest side portion to an full buffet serving.

- » Made from renewable and reclaimed sugarcane fiber
- » Three shapes and many sizes to choose from
- » Select sizes available in white or natural color
- » Meet ASTM standards for compostability
- » For use with hot or cold foods
- » Grease- and cut-resistant
- » Microwaveable and freezable

SUGARCANE PLATES & BOWLS

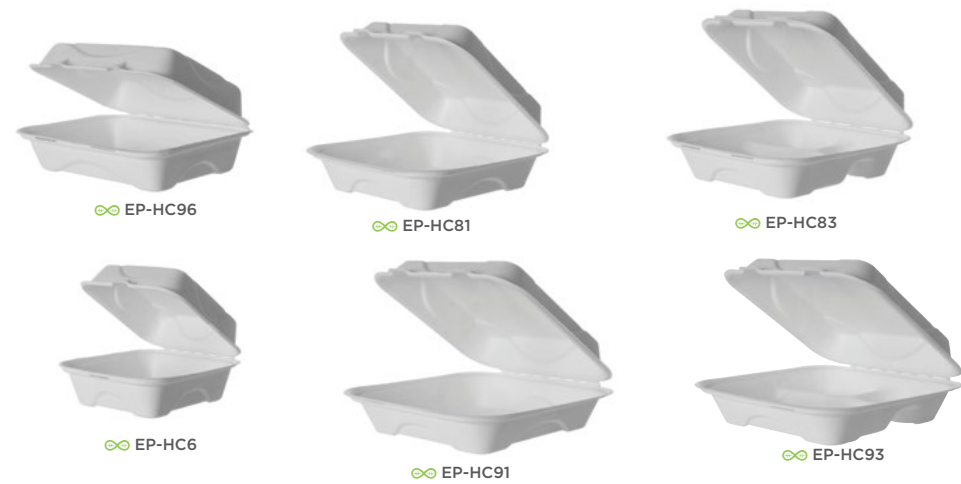
| GS/BS | ITEM# | DESCRIPTION | LID | MATERIAL | COMPOSTABLE | | | | QTY | |
|----------------------|------------|---|------------------------|-----------|----------------|---------------|-----------|--------------|----------------|----------|
| | | | | | COLD FOOD ONLY | MICROWAVEABLE | FREEZABLE | CUSTOMIZABLE | | |
| | | | | | PRINTED SLEEVE | | | | | |
| Round Plates | | | | | | | | | | |
| ∞ | EP-P016 | 6in Plate, White | | Sugarcane | ■ | ■ | ■ | ■ | 20 packs of 50 | 1,000/cs |
| ∞ | EP-P013 | 9in Plate, White | | Sugarcane | ■ | ■ | ■ | ■ | 10 packs of 50 | 500/cs |
| ∞ | EP-P013LID | Lid: 9in Plate Lid, Clear | | RPET | ■ | ■ | ■ | ■ | 6 packs of 50 | 300/cs |
| ∞ | EP-P005 | 10in Plate, White | | Sugarcane | ■ | ■ | ■ | ■ | 10 packs of 50 | 500/cs |
| Square Plates | | | | | | | | | | |
| ∞ | EP-P023 | 10in Large Plate, White | | Sugarcane | ■ | ■ | ■ | ■ | 5 packs of 50 | 250/cs |
| Classic Bowls | | | | | | | | | | |
| ∞ | EP-BL12 | 12oz Bowl, 6x1.5in, White | N/A | Sugarcane | ■ | ■ | ■ | ■ | 20 packs of 50 | 1,000/cs |
| Coupe Bowls | | | | | | | | | | |
| ∞ | EP-BL24-C | 24oz Bowl, 7.5x1.5in, White | BLRLID, BLLID, BLRDLID | Sugarcane | ■ | ■ | ■ | ■ | 8 packs of 50 | 400/cs |
| ∞ | EP-BL32-C | 32oz Bowl, 7.5x2in, White | BLRLID, BLLID, BLRDLID | Sugarcane | ■ | ■ | ■ | ■ | 8 packs of 50 | 400/cs |
| Noodle Bowls | | | | | | | | | | |
| ∞ | EP-BL24 | 24oz Bowl, 7.5x2in, White | BLRLID, BLLID, BLRDLID | Sugarcane | ■ | ■ | ■ | ■ | 8 packs of 50 | 400/cs |
| ∞ | EP-BL32 | 32oz Bowl, 7.5x2.5in, White | BLRLID, BLLID, BLRDLID | Sugarcane | ■ | ■ | ■ | ■ | 8 packs of 50 | 400/cs |
| ∞ | EP-BL40 | 40oz Bowl, 7.5x3in, White | BLRLID, BLLID, BLRDLID | Sugarcane | ■ | ■ | ■ | ■ | 8 packs of 50 | 400/cs |
| Lids | | | | | | | | | | |
| ∞ | EP-BLRLID | Lid: Flat Lid (24-46oz Coupe/16-40oz Noodle Bowls), Clear | | 100% RPET | ■ | ■ | ■ | ■ | 8 packs of 50 | 400/cs |
| ∞ | EP-BLLID | Lid: Flat Lid (24-46oz Coupe/16-40oz Noodle Bowls), Clear | | PLA | ■ | ■ | ■ | ■ | 8 packs of 50 | 400/cs |
| ∞ | EP-BLRDLID | Lid: Dome Lid (24-46oz Coupe/16-40oz Noodle Bowls) | | 100% RPET | ■ | ■ | ■ | ■ | 8 packs of 50 | 400/cs |

Sugarcane Clamshells

- » Made from renewable resources — reclaimed bagasse fiber
- » Meet ASTM standards for compostability
- » For use with hot or cold foods
- » Grease- and cut-resistant
- » Microwaveable and freezable



SUGARCANE CLAMSHELLS



SOAK-PROOF CLAMSHELLS



Need signs for your bins? Our design team can help! See page 26.



| SUGARCANE CLAMSHELLS | | | | COMPOSTABLE | | |
|------------------------------|----------|-----------------------------------|---------------|----------------|---|----------------|
| | | | | COLD FOOD ONLY | | |
| | | | | MICROWAVEABLE | | |
| | | | | FREEZABLE | | |
| | | | | CUSTOMIZABLE | | |
| | | | | PRINTED SLEEVE | | |
| GS/BS | ITEM# | DESCRIPTION | MATERIAL | | | QTY |
| Clamshells | | | | | | |
| ∞ | EP-HC96 | 9x6x3in Clamshell, White | Sugarcane | ■ | ■ | 5 packs of 50 |
| ∞ | EP-HC6 | 6x6x3in Clamshell, White | Sugarcane | ■ | ■ | 10 packs of 50 |
| ∞ | EP-HC81 | 8x8x3in Clamshell, White | Sugarcane | ■ | ■ | 4 packs of 50 |
| ∞ | EP-HC83 | 8x8x3in, 3-Compt Clamshell, White | Sugarcane | ■ | ■ | 4 packs of 50 |
| ∞ | EP-HC91 | 9x9x3in Clamshell, White | Sugarcane | ■ | ■ | 4 packs of 50 |
| ∞ | EP-HC93 | 9x9x3in, 3-Compt Clamshell, White | Sugarcane | ■ | ■ | 4 packs of 50 |
| Soak-Proof Clamshells | | | | | | |
| ∞ | EP-HCL81 | 8x8x3in Clamshell, White | Sugarcane/PLA | ■ | ■ | 4 packs of 50 |
| ∞ | EP-HCL91 | 9x9x3in Clamshell, White | Sugarcane/PLA | ■ | ■ | 4 packs of 50 |

| BAGS & LINERS | | | | | COMPOSTABLE | | |
|-------------------------|---------|--|--------------------|----------|----------------|---|----------------|
| | | | | | COLD FOOD ONLY | | |
| | | | | | MICROWAVEABLE | | |
| | | | | | FREEZABLE | | |
| | | | | | CUSTOMIZABLE | | |
| | | | | | PRINTED SLEEVE | | |
| GS/BS | ITEM# | DESCRIPTION | THICKNESS | MATERIAL | | | QTY |
| Compostable Bags | | | | | | | |
| ∞ | EP-CBMS | Medium Shopper Bag, Translucent Green | 16x20in (.8 mil) | PLA | ■ | ■ | 10 sets of 50 |
| ∞ | EP-CBLS | Large Shopper Bag, Translucent Green | 18x23in (.9 mil) | PLA | ■ | ■ | 10 sets of 50 |
| ∞ | EP-CB13 | 13 Gallon Can Liner, Translucent Green | 23.5x29in (.9 mil) | PLA | ■ | ■ | 10 rolls of 25 |
| ∞ | EP-CB33 | 33 Gallon Can Liner, Translucent Green | 33x40in (.8 mil) | PLA | ■ | ■ | 8 rolls of 25 |
| ∞ | EP-CB39 | 39 Gallon Can Liner, Translucent Green | 35x44in (1 mil) | PLA | ■ | ■ | 5 rolls of 20 |
| ∞ | EP-CB45 | 45 Gallon Can Liner, Translucent Green | 34x48in (1 mil) | PLA | ■ | ■ | 5 rolls of 20 |
| ∞ | EP-CB55 | 55 Gallon Can Liner, Translucent Green | 42x48in (1 mil) | PLA | ■ | ■ | 5 rolls of 20 |

Plantware® Cutlery

With undeniable environmental benefits and a rainbow of colors to choose from, this cutlery is a no-brainer choice for waste diversion. Match your decor, season, team colors, or party theme without sacrificing sustainability.

- » Made from renewable resources
- » Made with PLA, a plant-based plastic
- » Meets ASTM standards for compostability
- » BPI-certified compostable
- » Crystallized for high heat tolerance (200°)
- » Cutlery wrappers are also compostable!



Vine™ Cutlery

- » Made from renewable resources
- » Made with PLA, a plant-based plastic
- » Meets ASTM standards for compostability,
- » BPI-certified compostable
- » Spoon is crystallized for higher heat tolerance (200°)
- » Napkin ring on cutlery kit is not compostable



- ## 100% Recycled Cutlery
- » First of its kind made from 100% post-consumer recycled polystyrene
 - » Compared to traditional single-use cutlery that is made from virgin plastic, it diverts plastic from landfills at beginning-of-life.
 - » Performs just like a traditional plastic cutlery while using no virgin petroleum



PSM Cutlery

- » Made with a blend of renewable resources and traditional plastic for strength and heat tolerance
- » A good choice for areas where composting is not yet available
- » Please note: PSM Cutlery is not compostable.



| CUTLERY | | | | | | COMPOSTABLE | | | | QTY | |
|--------------------------------------|-------------|--|--------|----------|----------------|---------------|-----------|----------------|----------------|----------|--|
| GS/BS | ITEM# | DESCRIPTION | MAX. | MATERIAL | COLD FOOD ONLY | MICROWAVEABLE | FREEZABLE | PRINTED SLEEVE | | | |
| Plantware® | | | | | | | | | | | |
| ∞ | EP-S011 | 6in Knife, White | 200° F | PLA | ■ | ■ | ■ | ■ | 20 packs of 50 | 1,000/cs | |
| ∞ | EP-S012 | 6in Fork, White | 200° F | PLA | ■ | ■ | ■ | ■ | 20 packs of 50 | 1,000/cs | |
| ∞ | EP-S013 | 6in Spoon, White | 200° F | PLA | ■ | ■ | ■ | ■ | 20 packs of 50 | 1,000/cs | |
| ∞ | EP-S014 | 6in Soup Spoon, White | 200° F | PLA | ■ | ■ | ■ | ■ | 20 packs of 50 | 1,000/cs | |
| ∞ | EP-S013G | 6in Spoon, Green | 200° F | PLA | ■ | ■ | ■ | ■ | 20 packs of 50 | 1,000/cs | |
| ∞ | EP-S015 | Wrapped Kit, White (K,F,S,N + Compostable Wrapper) | 200° F | PLA | ■ | ■ | ■ | ■ | Bulk Pack | 250/cs | |
| ∞ | EP-S011-W | Individually Wrapped Knife (Compostable Wrapper) | 200° F | PLA | ■ | ■ | ■ | ■ | Bulk Pack | 1,000/cs | |
| ∞ | EP-S012-W | Individually Wrapped Fork (Compostable Wrapper) | 200° F | PLA | ■ | ■ | ■ | ■ | Bulk Pack | 1,000/cs | |
| ∞ | EP-S017-W | Individually Wrapped Dinner Fork (Compostable Wrapper) | 200° F | PLA | ■ | ■ | ■ | ■ | Bulk Pack | 1,000/cs | |
| ∞ | EP-S013-W | Individually Wrapped Spoon (Compostable Wrapper) | 200° F | PLA | ■ | ■ | ■ | ■ | Bulk Pack | 1,000/cs | |
| ∞ | EP-S014-W | Individually Wrapped Soup Spoon (Compostable Wrapper) | 200° F | PLA | ■ | ■ | ■ | ■ | Bulk Pack | 1,000/cs | |
| Vine™ | | | | | | | | | | | |
| ∞ | ESVBKEROLL3 | Cutlery Roll, Black w/Brown Napkin (K,F,S,N) <i>Napkin ring is not compostable</i> | | | ■ | ■ | ■ | ■ | 4 packs of 25 | 100/cs | |
| PSM Cutlery (Not Compostable) | | | | | | | | | | | |
| ∞ | EP-S001 | 7in Knife, White | 200° F | PSM | ■ | ■ | ■ | ■ | 20 packs of 50 | 1,000/cs | |
| ∞ | EP-S002 | 7in Fork, White | 200° F | PSM | ■ | ■ | ■ | ■ | 20 packs of 50 | 1,000/cs | |
| ∞ | EP-S003 | 7in Spoon, White | 200° F | PSM | ■ | ■ | ■ | ■ | 20 packs of 50 | 1,000/cs | |
| ∞ | EP-S005 | Wrapped Cutlery Kit (K,F,S,N) | 200° F | PSM | ■ | ■ | ■ | ■ | Bulk Pack | 250/cs | |
| ∞ | EP-S071 | 7in Knife, Wrapped | 200° F | PSM | ■ | ■ | ■ | ■ | Bulk Pack | 750/cs | |
| ∞ | EP-S072 | 7in Fork, Wrapped | 200° F | PSM | ■ | ■ | ■ | ■ | Bulk Pack | 750/cs | |
| ∞ | EP-S073 | 7in Spoon, Wrapped | 200° F | PSM | ■ | ■ | ■ | ■ | Bulk Pack | 750/cs | |
| 100% Recycled Cutlery | | | | | | | | | | | |
| ♻️ | EP-S111 | 6in Knife, Black | 180° F | 100% RPS | ■ | ■ | ■ | ■ | 20 packs of 50 | 1,000/cs | |
| ♻️ | EP-S112 | 6in Fork, Black | 180° F | 100% RPS | ■ | ■ | ■ | ■ | 20 packs of 50 | 1,000/cs | |
| ♻️ | EP-S113 | 6in Spoon, Black | 180° F | 100% RPS | ■ | ■ | ■ | ■ | 20 packs of 50 | 1,000/cs | |
| ♻️ | EP-S114 | 6in Soup Spoon, Black | 180° F | 100% RPS | ■ | ■ | ■ | ■ | 20 packs of 50 | 1,000/cs | |
| ♻️ | EP-S115 | Wrapped Cutlery Kit (K,F,S,N) | 180° F | 100% RPS | ■ | ■ | ■ | ■ | Bulk Pack | 250/cs | |

ADVOCACY:

We could just sell cups and call it a day, but at Eco-Products®, we're committed to a Zero Waste future — this is truly what drives us. We strive to lead our industry to become one that solves problems instead of creates them.

Using Business as a Force for Good



Eco-Products officially became a certified B Corp in July 2016, and we were recertified in early 2019. If you're not familiar with B Corp, think of it as a sustainability certification for businesses, similar to what organic certification is for milk, or what Fair Trade certification is for coffee. Companies who are certified B Corps have been verified by the nonprofit organization B Lab to meet the highest standards of social and environmental performance, transparency, and accountability. This puts Eco-Products alongside some of the most respected sustainability-minded brands such as Patagonia®, Ben & Jerry's®, Seventh Generation®, and Etsy® - just to name a few. You can find out more about B Corp by checking out its website <https://www.bcorporation.net/>.

Memberships & Partnerships

We know we can only do so much as one company, even if we're working our tails off. That's why we're active in a number of industry groups. Collaboration = bigger impact.

| | |
|--|---|
| | The US Composting Council (USCC) advances compost manufacturing, compost utilization, and organics recycling to benefit its members, society, and the environment. |
| | The Biodegradable Products Institute (BPI) is a nonprofit association of key individuals and groups from government, industry, and academia. Through its innovative compostable label program, BPI educates manufacturers, legislators, and consumers about the importance of scientifically based standards for compostable materials that biodegrade in large composting facilities. |
| | We are a founding partner of the Green Sports Alliance (GSA). The GSA leverages the cultural and market influence of sports to promote healthy, sustainable communities where people live and play. The Alliance inspires professional sports leagues, college conferences, sports governing bodies, colleges, teams, venues, their partners, and millions of fans to embrace renewable energy, healthy food, recycling, water efficiency, safer chemicals, and other environmentally preferable practices. |
| | The Sustainable Packaging Coalition (SPC) is an industry working group dedicated to a more robust environmental vision for packaging. Through strong member support, an informed and science-based approach, supply chain collaborations, and continuous outreach, it endeavors to build packaging systems that encourage economic prosperity and a sustainable flow of materials. |
| | Established in 1933, the Foodservice Packaging Institute (FPI) is the trade association for the foodservice packaging industry in North America. FPI's members include raw material and machinery suppliers, packaging converters, foodservice distributors, and operators/retailers. |
| | Recycle Colorado is the leading independent, nonprofit organization in Colorado that is actively working to promote and encourage recycling through programs that educate the public, local governments, businesses, and Colorado's elected officials. Recycle Colorado's programs are designed to provide technical assistance to those wishing to recycle and compost. |
| | The Compost Manufacturing Alliance LLC (CMA) is a privately owned operational research and testing group consisting of major industrial composting facilities across the U.S. CMA works with compostable product manufacturers to field test compostable products under real-world conditions across multiple processing technologies. |

Third Parties are Validating our Systems Solutions Approach

We have long believed in and advocated for the role compostable packaging can play in diverting food scraps from landfills. With compostable packaging, the concert goer, baseball fan, or restaurant customer doesn't have to sort their uneaten sandwich crust from their plate. Putting everything in one bin makes life easier for them . . . and the composter. Recently, a number of reports have highlighted the benefit that composting and compostable packaging can have in waste diversion.

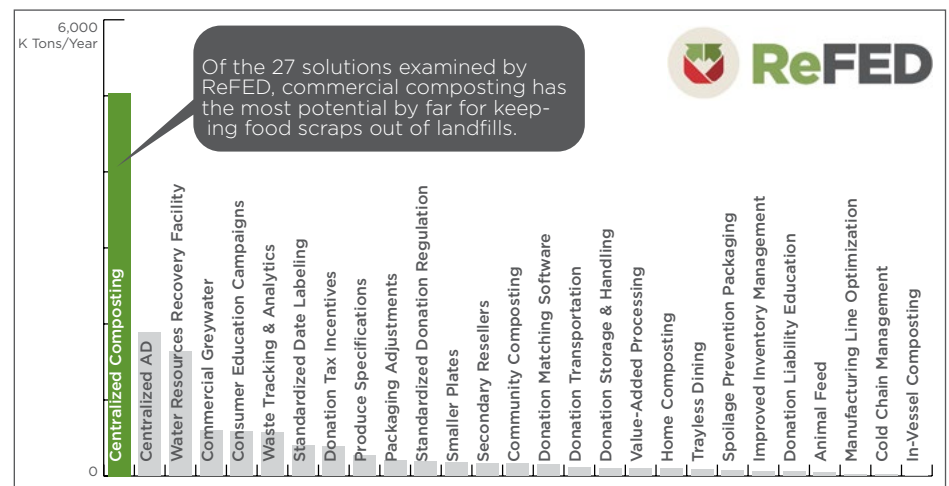
The Ellen MacArthur Foundation New Plastics Economy vision for a more sustainable approach to plastics includes compostable packaging for food contact applications. <https://newplasticseconomy.org/report-2017>

BioCycle published an article that quantified food scraps diverted through the use of compostable packaging. Composters got 72% more food when operators used compostable foodservice packaging. <https://www.biocycle.net/2016/08/15/compostable-products-postconsumer-food-scrap/>

According to the **SPC's "The Value of Compostable Packaging"** report, by using compostable packaging at Farm Aid 2016, the festival organizers:

1. Kept more than 19,000 pounds of food out of the landfill.
 2. Prevented the release of more than 14,000 pounds of CO₂ into the atmosphere.
 3. Increased food scraps collection by an incredible 122%!
- <http://greenblue.org/work/value-of-compostable-packaging/>

ReFED identified commercial composting as the solution with the greatest potential for keeping food scraps out of landfills. <http://www.refed.com>





To us, something is “compostable” if there is scientific evidence that the product will break down or become part of stable compost in a safe and timely manner, in a properly managed commercial composting facility.

Our Approach to Compostability

Compostability seems simple – either a product is compostable or it is not, right? Not quite. In the compostable foodservice packaging world, there are different ways to think about whether something is compostable: Is it obviously going to break down into soil components, like a paper napkin? Is it third-party certified by BPI? Does your composter simply say “I’ll take it!”? We want to provide some clarity on our use of this term so you know what we mean when we use it in our communication.

To us, something is “compostable” if there is scientific evidence that the product will break down or become part of stable compost in a safe and timely manner, in a properly managed commercial composting facility. (If that language looks familiar, it’s because we basically lifted copy from the Federal Trade Commission’s Green Guides.) What counts as “scientific evidence”? For us, the minimum is ASTM standards for compostability: ASTM D6400 for bioplastic and ASTM D6868 for fiber-based items (with or without bioplastic).

For items that are designed to meet BPI’s requirements for compostability, we are committed to earning BPI certification. This includes all of our cold, paper, and soup cups; PLA and fiber lids; PLA cutlery; liners; coffee sleeves; and Vanguard™ molded fiber. Our conventional, non-Vanguard molded-fiber products use FDA-approved compounds to achieve grease resistance that do not meet BPI requirements. Therefore, these molded fiber items are not BPI-certified compostable. However, they do meet ASTM standards and thus are still considered “compostable.”

In addition to our commitments to ASTM and BPI, we submit all of our BPI-certified items to the Compost Manufacturing Alliance (CMA) for field testing.

The only exception to our ASTM requirement are items that are considered “generally accepted as compostable.” This would be our wooden stir sticks and napkins – natural fiber items that most composters accept without question. We also are working with our food tray and wooden cutlery suppliers on ASTM and other appropriate verification.



ASTM INTERNATIONAL

ASTM D6868

ASTM D6400

Compost Manufacturing Alliance: Field Testing for Compostability

The CMA is a nationwide partnership of compost manufacturing facilities providing field disintegration testing for foodservice products across the country. CMA’s mission is to make compost manufacturing more sustainable by working proactively to field-test compostable products in real-world compost processing technologies. Eco-Products was one of the first supporters of CMA as we see value in having composters test and confirm that our products break down successfully at their facilities. This is a valuable complement to the lab-based BPI certification, which we have long used as third-party validation of compostability. We have committed to testing all of our BPI-certified products with CMA as well.

| Material Category | CMA-W Approval | CMA-I Approval |
|--|---|---|
| PLA Thermoforms Cold cups, clear portion cups, clear lids, clear containers, and all other PLA clear items | ✓ Approved | ✓ Approved |
| cPLA Thermoform Lids cPLA soup cup and hot cup lids, and any other cPLA lids | ✓ Approved | ✓ Approved |
| Injection Molded Cutlery & Plates cPLA and PLA cutlery and plates | ✓ Approved | ✓ Approved |
| White Bagasse | ✓ Approved | ⊖ Not Accepted |
| Natural Bagasse | ✓ Approved | ⊖ Not Accepted |
| Wheat Straw | ✓ Approved | ✓ Approved |
| Bamboo/Bagasse Blend | ✓ Approved | ⊖ Not Accepted |
| Paper Hot Cups & Soup Cups | ✓ Approved | ✓ Approved |
| Paper Hot Cup Sleeves | ✓ Approved | ✓ Approved |
| Bags | ✓ Approved | ✓ Approved |
| Wooden Stir Sticks | ✓ Approved | ✓ Approved |
| Paper Straws | ●●● In Progress | ✓ Approved |
| PLA Straws | ●●● In Progress | ✓ Approved |
| Food Trays | ●●● In Progress | ✓ Approved |
| | CMA-W: Windrow Process CMA Testing Facilities: • We Care Staten Island • St. Louis Composting | CMA-I: Covered In-Vessel ASP Process* CMA Testing Facility: • Cedar Grove Compost <small>*(Formerly Cedar Grove Approved)</small> |

As new testing sites and different composting processes are incorporated into the CMA, we plan to test our products with each technology. As leaders in the compostable packaging industry, we feel it is important to support efforts to expand acceptance of compostable foodservice ware and are excited to be working with this impressive partnership of commercial composters.

SERVICES:

Purchasing packaging is only the first step. When you're ready to promote your sustainability efforts, train your employees, and educate your customers about what you are doing and why, we're ready to help.

Marketing Support

Stock Pieces

Stock posters, table tents, and window clings are available to order.



Personalized Pieces

Add a logo to personalize our posters, signs, table tents, stickers, digital displays, etc.



Design is our speciality, but what about production? We can cover printing up to a certain amount. Visit ecoproducts.com/custom for details.

Custom Pieces

We can start from scratch to design a piece to match a particular look and feel, or design to a spec.



Videos

Our case studies aren't just for our benefit. Our customers can use them to spread their story, too.



youtube.com/user/greenisallwedo

Employee Training

We can create back-of-house signs, presentations, or even videos to help train staff about our products and proper disposal.



Life Cycle Analysis

We calculate our carbon footprint so we can use that data to create a customized carbon footprint for our customers.



Custom Prints & Emboss

Why not communicate right on the products themselves? We have more than 120 items prime for customization.



Custom Shapes

For an extra special package, our product design team can create something unique and functional to fulfill a specific need when stock just doesn't cut it.



Stock/Order Guides

Essentially a catalog with a custom product assortment, these guides can help customers with multiple locations know what's available to them.



Consultative Services

Sustainability Maven

Our very own in-house expert on sustainability keeps us up-to-date on legislation and policy, tracks our product and operational impacts, and trains sales and operators on composting, recycling, and all of the above.

Operator Specialists

This team is a perfect hybrid between sales, sustainability, and boots-on-the-ground logistics. They have all the knowledge and expertise to navigate our products, policy details, and relationships with haulers/composters, plus aid with marketing and communication.

Zero Waste Toolkit

We are the hand to hold on your sustainability journey, and we literally charted the map to direct you toward achieving your waste-diversion goals.

More about Operator Specialists


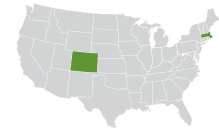


What is an Operator Specialist?

- Sustainability Maven in the field - Keeps up-to-speed on local legislation changes
- Acts as an extension of your staff by supporting brokers and distributor reps with any key operator opportunities
- Gatekeeper of database and analytics specific to our network of composters and haulers in your marketplace
- Assists in the advancement of waste-diverting operators by offering both marketing and hands-on training support

Operator Specialist Regions



Operator Specialist Case Study

| TYPE | OS REGION | PRODUCTS | HAULER/COMPOSTER |
|--|---|---|---|
| Aquarium | New England | Cups, plates, cutlery | |
|  New England Aquarium |  |  RENEWABLE RESOURCES |  BLACK EARTH COMPOST |

- The New England Aquarium is located in downtown Boston. During a switch in concessionaire providers, they expressed an interest in becoming more sustainable. Their efforts started with working to eliminate straws and evolved into an industry-leading waste diversion program.
- Our Operator Specialist helped the Aquarium with identifying packaging that meets their needs, connecting them with a regional composter/hauler, and guiding them on how to make effective bin signage.
- The Aquarium is currently using a full suite of GreenStripe® compostable packaging, including cups, plates, and cutlery.

2020 SUSTAINABILITY REPORT HIGHLIGHTS

Our complete Sustainability Report can be found at ecoproducts.com/sustainability-report

| Zero Waste Operators | | People |
|---|---|--|
| <p>We expanded our Operator Specialist team, with five positions across the U.S., to help more customers adopt Zero Waste practices. This team was a big reason why we converted over 13 new Zero Waste operators in 2019.</p> | <p>We completed a study with local nonprofit, Eco-Cycle, that showed that compostable products and durables are the most effective approaches for capturing food waste with minimal contamination in the front-of-house.</p> | <p>We held a manager-level training to sharpen our people management skills, and grow as a team.</p> <p>Over 55% of our employees used their paid time off to volunteer in their community.</p> |
| Products | | Operations |
| <p>We launched our new line of molded fiber products - Vanguard™ - which uses a proprietary chemistry combination that provides grease and water resistance without the use of per- and polyfluoroalkyl substances (PFAS). Vanguard™ was the first molded fiber foodservice packaging offering that achieved BPI certification under updated requirements.</p> | <p>We began selling compostable cutlery for the Cutlerease™ Dispensing System to make it more convenient and hygienic for foodservice operators to dispense BPI-certified compostable cutlery to their customers. This system also makes it easier to restock cutlery while reducing the transfer of germs.</p> | <p>We installed an additional 25 KW of solar on our roof in Boulder, CO.</p> <p>We offset Scopes 1 & 2 emissions associated with our headquarters in Boulder, as well as Scope 3 emissions from paper consumption, business travel, and employee commuting.</p> <p>We restored 179,350 gallons of water with Bonneville Environmental Foundation, which was equal to the amount used at our HQ in Boulder in 2019.</p> |
| Zero Waste Infrastructure | | |
| <p>Within the U.S., we continued to pursue our aspirational goal of expanding access to commercial composting in three communities by 2020. The three targets that we have been primarily focusing on are Atlanta, Chicago, and Sacramento. This year, we saw meaningful progress toward this goal in all three communities, in addition to many others across the country.</p> | <p>We gained approval in two Compost Manufacturing Alliance (CMA) technologies for accepted foodservice packaging items at large-scale composting sites around the country.</p> | <p>We increased our understanding and familiarity of the organics recycling industry in Canada while working with our sister company, Polar Pak.</p> |

CASE STUDIES

Read about the amazing progress some of our Zero Waste partners have made.

Arizona Wilderness Brewing

| TYPE | OS REGION | PRODUCTS | HAULER/COMPOSTER |
|---------|-----------|--|------------------|
| Brewery | SoCal/SW | Cold cups, trays, cutlery, soup cups, clamshells | R.CITY |

- Arizona Wilderness Brewing (AWB) was created to “celebrate hand-crafted, artisanal beers that are inspired by the beautiful and diverse state of Arizona.” Sustainability efforts that support conservation in Arizona are high priorities for the brewery.
- Eco-Products worked actively with AWB to expand its use of compostable packaging. The brewery is buying a full bundle of GreenStripe® items, including cold cups, cutlery, sugarcane clamshells, soup cups, and catering trays.
- Eco-Products collaborated with the composter to ensure our products would be accepted along with food scraps (which they are) and is providing marketing services to help the brewery promote its message.

Cleveland Museum of Natural History

| TYPE | OS REGION | PRODUCTS | HAULER/COMPOSTER |
|--------|-------------|--|------------------|
| Museum | Ohio Valley | Hot cups, sleeves, lids, cutlery, clamshells | RUST BELT RIDERS |

- The Cleveland Museum of Natural History, located in downtown Cleveland, is a hands-on museum with a multitude of exhibits, groups and seminars. They have a sustainability focus within their café, where they are using all environmentally preferable products and are waste-diverting in both the front- and back-of-house.
- Eco-Products and Krehbiel and Associates have been engaged in the museum’s Zero Waste journey. More than 90% of the product line-up has been converted to Eco-Products, and the team has worked to develop bin signage and a large banner to promote the museum’s waste diversion initiatives.
- The Museum is using a broad range of Eco-Products items including hot cups, sleeves, and lids, clamshells, and Plantware® cutlery.

Products by Category

- Bags & Liners39
- Clear Grab & Go Containers23
- Cold Cups — Recycled19
- Cold Cups — Renewable19
- Concessions.....39
- Cutlery40
- Hot Cup Accessories15
- Hot Cups — Recycled17
- Hot Cups — Renewable15
- CutlerEase™ 8
- Folia™ One-Piece Containers37
- Meat & Produce Trays.....36
- Other Plates.....33
- Paper Food Containers — Recycled17
- Paper Food Containers — Renewable16
- Regalia™ Servingware43
- Straws20
- Sugarcane Bowls.....31
- Sugarcane Clamshells34
- Sugarcane Plates33
- Vanguard™ Molded Fiber 9
- WorldView™ Sugarcane Containers27

We welcome your feedback on this report or our work!
Email us with your comments or questions at sustainabilitymaven@ecoproducts.com



PRODUCTS®

A NOVOLEX BRAND

Certified



This company meets the
highest standards of social
and environmental impact

Corporation



@Eco-Products



@Eco-Products



@Eco-Products



@Eco-Products



/GreenIsAllWeDo

© 2022 Eco-Products® PBC | 4755 Walnut Street, Boulder, CO 80301 | www.ecoproducts.com

This catalog may contain the following trademarks - all rights reserved by Eco-Products® or their respective owners:

EcoLid® - EcoGrip® - Plantware® - GreenStripe® - BlueStripe® - World Art™ - Evolution World™

BioShopper™ - WorldView™ - Vine™ - World Delight™ - Folia® - Regalia™ - Dahlia™ - Cutlerease™ - Vanguard™

This Is Not A Cup™ - Green Is All We Do™ - This Is Why Green Is All We Do™